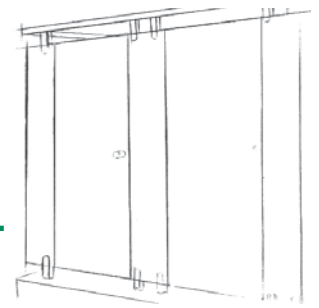


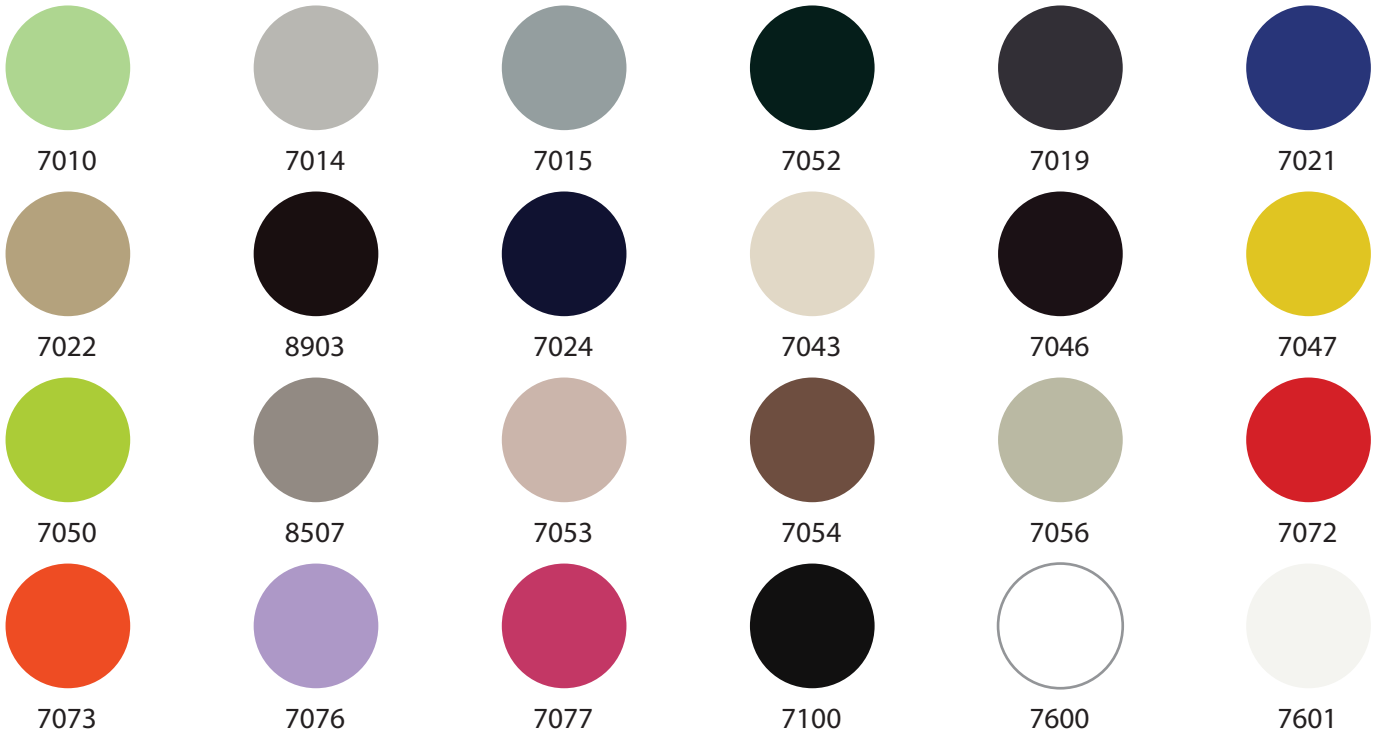


CUBICLES | PARTITIONS | LOCKERS | PODS





COLORS MATT / GLOSS



TEXTURED FINISHES



FEATURES

Fire Retardant capacity:

Burns only when subjected to flame, but does not burn by itself. Non flammable

Termite proof quantitative measures:

Termite proof and no termites or other insects can harm the product

Resistance to boiling water surface change:

Resist Boiling water and no surface change

Dimensional stability:

No deformation noticed

Chemical/Acids/Alkalis Resistance :

Resists tea, coffee, water, acetone, ethyl alcohol, household ammonia, 10% citric acid, vegetable oil, wax crayon, black shoe polish but non resistive to concentrated acids like H₂SO₄

SPECIFICATIONS

Smoke toxicity & Reaction to fire:

Does not release Toxic smoke.
Does not burn after removal of fire source

Impact resistance:

0.35 ft-lbf per 12.7 mm width of notch

Impact strength edgewise (Minimum):

0.35 ft - lbf per 12.7 mm width of notch

Insulation resistance after immersion in water:

05-20 MΩ

Water absorption (1.2mm to 4.5mm):

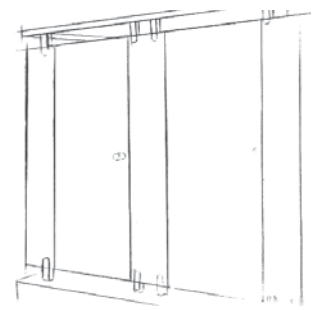
(460mg to 650 mg) in 24Hrs

Density:

1400 Kg/m³

Resistance to dry heat:

Resist 180° C for 20 min



ACCESSORIES



Door Knob



Door Hinges



Hook



Visibility Lock



L Bracket



Pedestal



Headrail



Connecting T



Door Guard



Connecting Channel



U Channel

192.552

HPL Based Phenolic Laminates

High Pressure Laminate is durable decorative surface material having resistance to chemical, fire, tear & wear.

Width available from 1mm to 60mm

Maximum Sheet size 1220 mm (w) x 2440 mm (h)

British Standard BS (EN 60893-3-4: 2004)

Technical Laminates

Technical Laminates are Paper based phenolic laminates Impact, heat, and moisture resistant

Width available from 1mm to 60mm

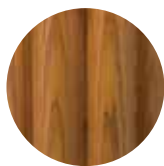
Maximum Sheet size 1220 mm (w) x 2440 mm (h)

British Standard BS (EN 60893-3-4: 2004)

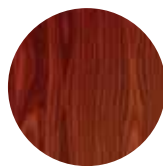
Expressive layout with ultra-current appearance, highly resistant to scratch and abrasion. Available in following finishes.



3D DIAMOND - 5490



ASHWOOD - 960



CHERRYWOOD - 930



PINEWOOD - 920



STONE - 941



3D FLOWER- 990



ARTISAN WALNUT - 980



FABRIC - 7005



RIBWOOD - 950



TEXTURE - 85



ANTIQUÉ - 640



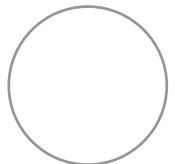
BUTTERBUT - 970



LEATHER - 7554



SAPPI - 7517



PLAIN



cubeluxe[™]
EVOLVE YOUR SPACE



by



PROTECH CO. (PVT) LTD

LG-118-J, EME Sector, DHA Phase 12,
Multan Road, Lahore 53710 - Pakistan
Tel: +92 342 0042 042 Email: info@ppcl.pk